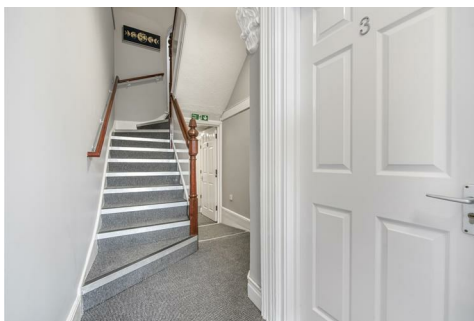




FORD & PARTNERS

ESTATE AGENTS



Room 8 2 Stuart Road, High Wycombe, HP13 6AG

Couples Considered (Additional Charge) - 50% Off First Month's Rent

An large en-suite double bedroom in a shared house within walking distance to High Wycombe Town Centre.

Available to rent from the 1st January 2026.

- ***50% Off First Month's Rent***
- **Ensuite Double Room**
- **Couples Considered**
- **Views over The Rye Park**
- **Spacious Common Areas**
- **Central Location**
- **Near The Rye Park**
- **Close to Mainline Station Station**
- **Available 1st January 2026**

£900 Per month

